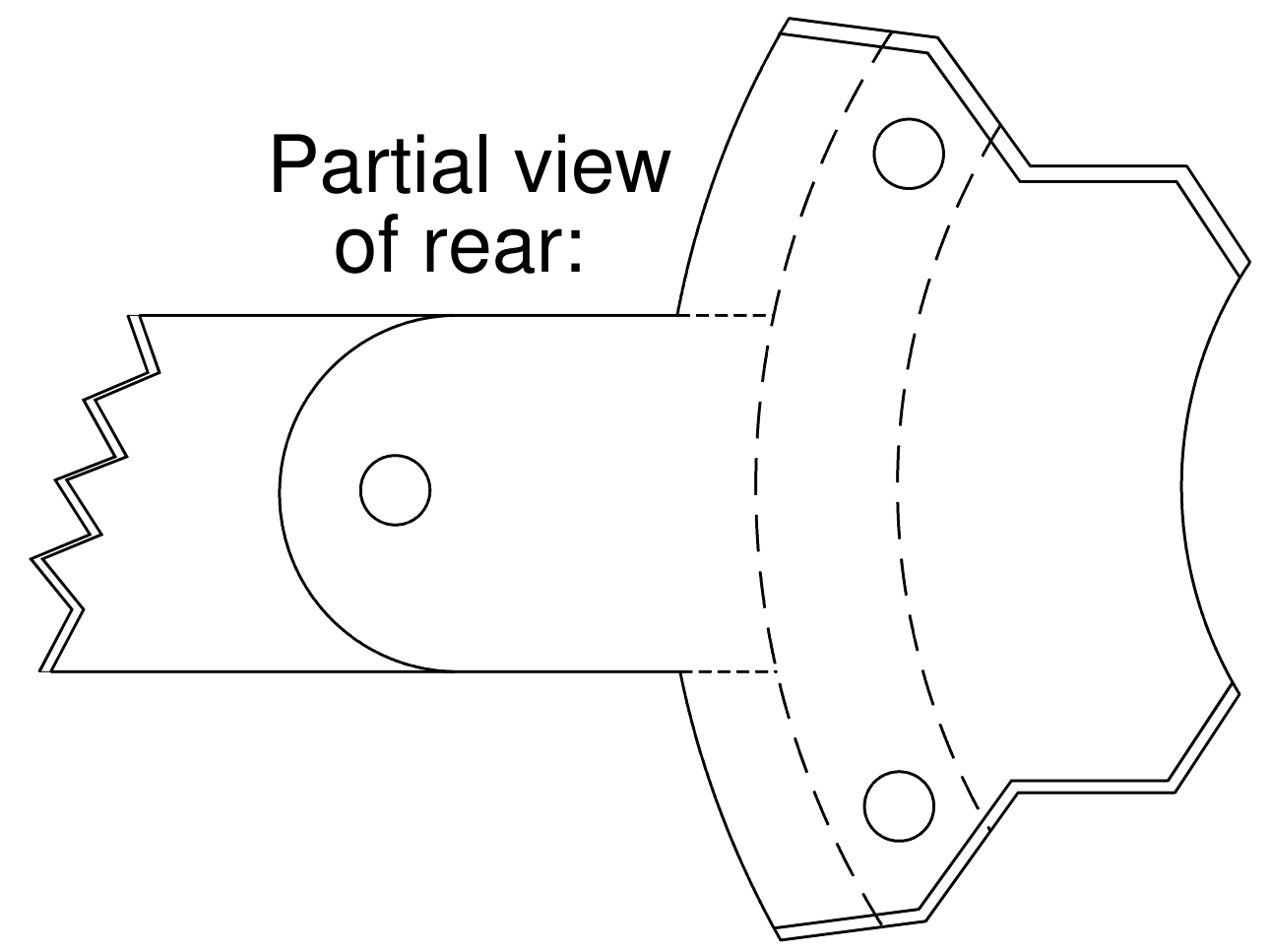
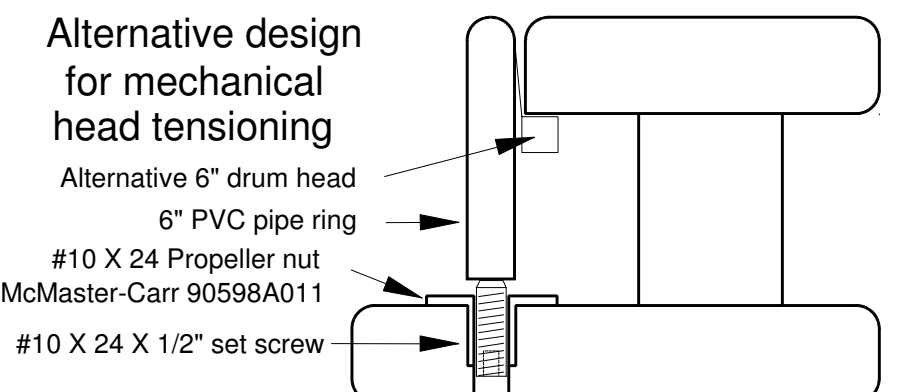


Bluestem Proffitt Style 25" Scale Banjo

Scale / size:	1:1 36" X 18" drawing size
Drawn by:	Randy Cordle
Date:	January 2009
File:	Bluestem Banjo Plan Proffitt Style.dcd
This drawing provided by Bluestemstrings.com and may not be re-produced, copied, or used for any purpose other than individual use without the express written permission of the author.	



Instrument as shown:
If finger board position marking is desired:
This 25" scale will center bridge on head.

Fret locations measured from nut:

1	1-13/32"
2	2-47/64"
3	3-63/64"
4	5-5/32"
5	6-17/64"
6	7-21/64"
7	8-5/16"
8	9-1/4"
9	10-9/64"
10	10-31/32"
11	11-3/4"
12	12-1/2"
13	13-13/64"
14	13-55/64"
15	14-31/64"
16	15-5/64"
17	15-41/64"

If finger board position marking is desired:
This 25-1/2" scale will position the bridge 1/2" behind head center.

Fret locations measured from nut:

1	1-7/16"
2	2-25/32"
3	4-1/16"
4	5-17/64"
5	6-25/64"
6	7-15/32"
7	8-31/64"
8	9-7/16"
9	10-11/32"
10	11-3/16"
11	11-63/64"
12	12-3/4"
13	13-15/32"
14	14-9/64"
15	14-25/32"
16	15-3/8"
17	15-61/64"

